

ALBINA ASPHALT
“Improving the Road Ahead”

Andy Anderson and Tom Shamberger

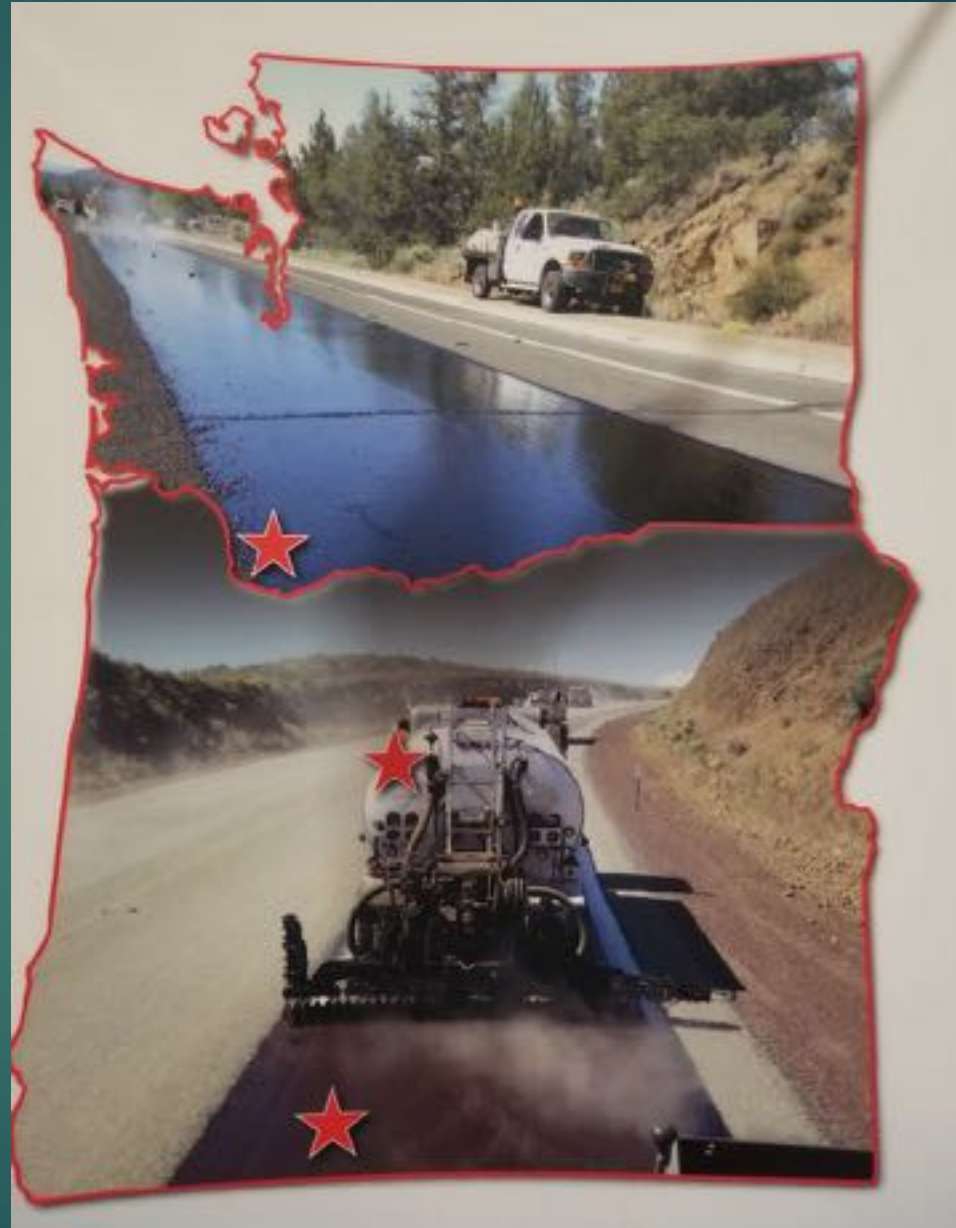


History of Albina Asphalt

- ❖ Albina Fuel was founded in 1903.
- ❖ The Vancouver asphalt plant was established in 1979.
- ❖ The Madras plant was purchased in 1988.
- ❖ The Klamath Falls plant was purchased in 1997.
- ❖ All three plants have been expanded to provide a full line of asphalt products.

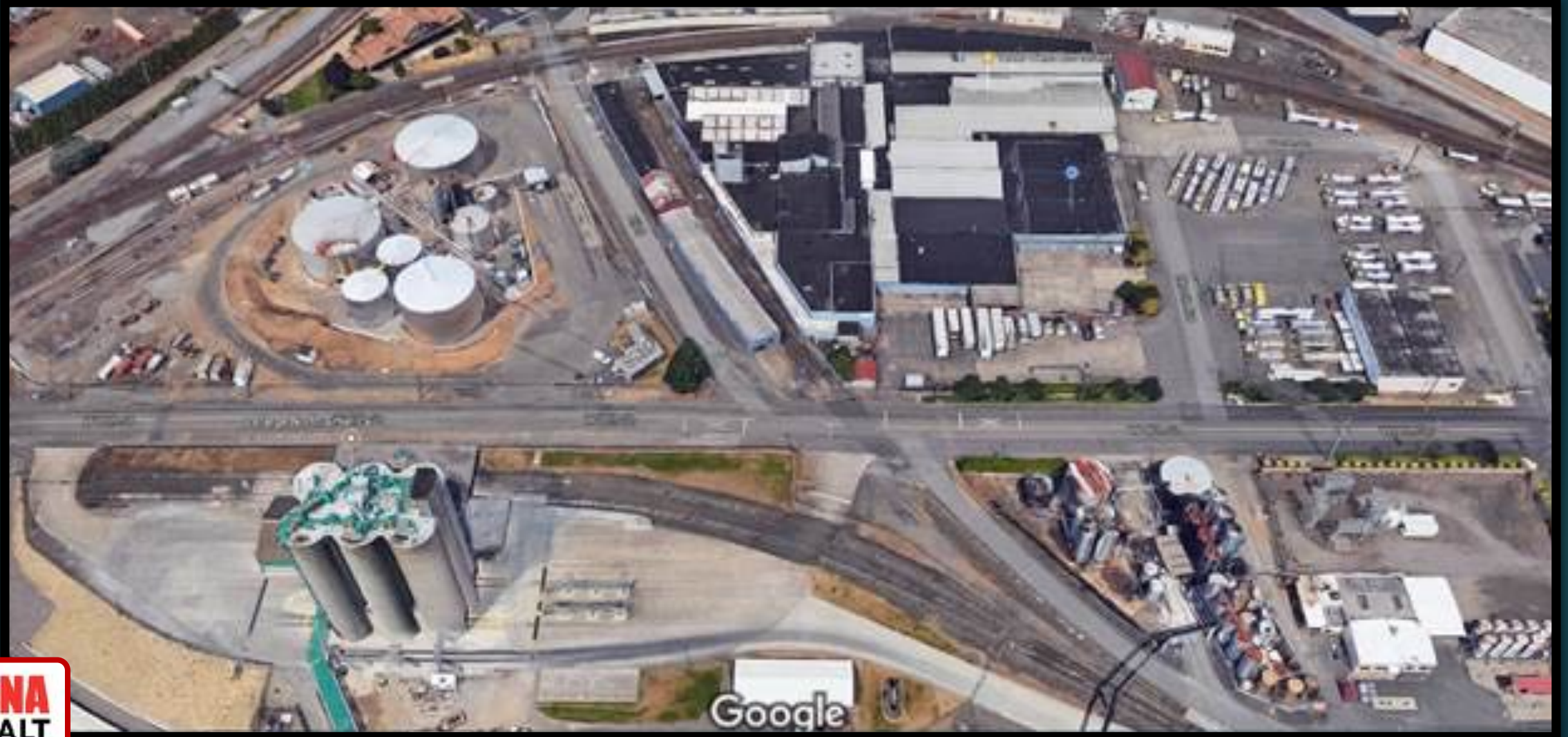


Asphalt Production Plants in both Oregon & Washington



improving the road ahead

Vancouver Asphalt Oil Facility



Madras Plant Asphalt Tanks and Load Rack



**ALBINA
ASPHALT**

Improving the road ahead.

ՀԱՅԿՍՏԱՆԻ ԸՄԵՆՈՑ ԳՐԱԳՐԱԿԱՆ

Madras Plant



**ALBINA
ASPHALT**

Improving the road ahead.

ἡμεῖς εἰς τὴν ὁδὸν ἄγουμεν

Madras Plant Lab



Klamath Falls Asphalt Plant



Klamath Falls Plant Load Rack



**ALBINA
ASPHALT**

Improving the road ahead.

αριθμός μηδενικού

Klamath Falls Lab





Trucking provided by:

- ❖ ARMAC Construction
- ❖ Bear Cat Transportation
- ❖ Select contract haulers



Services Albina Asphalt Provides to Customers

- ❖ Large selection of chip seal oils
- ❖ Consultation with supervisors and foreman for putting together your chip seal program
- ❖ Operational and safety training for field crews
- ❖ Chip rock testing
- ❖ Experienced field rep's to help get season started
- ❖ Distributors (both heated and emulsion)
- ❖ Transport trucks

Chip Seal oils available from Albina Asphalt

Anionic High Float Emulsions

- ❖ HFMS-2/HFE-150 – used for chip seals and Otta Seals
- ❖ HFRS-P2/HFE-100 S – Rapid set used on high traffic roads
- ❖ HFRS-P1/HFE- 90-1S – Rapid set emulsion
- ❖ RS-LTP - Used in cool, damp and shaded environments

Chip Seal Oils Available from Albina Asphalt

Cationic Emulsions

- ❖ CRS-2 – Rapid set emulsion
- ❖ CRS-2P – Polymer modified emulsion for high traffic roads
- ❖ PMCRS-2H – Polymer modified emulsion for high traffic – hard pen
- ❖ CRS-3P – A hybrid emulsion for high traffic areas
- ❖ CRS-LTP – Cationic rapid set emulsion for cool temperatures and shade

Fog Seals Oils Available from Albina Asphalt

- ❖ **CSS-1** – Cationic emulsion used as a fog seal over a chip seal when diluted
- ❖ **CSS-1H** – Cationic emulsion used as a fog seal with a harder pen asphalt base
- ❖ **SS-1H** - Anionic slow set emulsion for tack coat or a fog seal
- ❖ **HFRS-P1 D 50/50** – Anionic emulsion diluted for use as a fog seal

HFRS-P2

- ❖ Also known as HFE-100S
- ❖ High float rapid set emulsion
- ❖ Manufactured with 3% polymer
- ❖ Bonds to aggregate quickly and improves rock retention
- ❖ More elasticity with weather extremes
- ❖ Can be used on high volume roads

Cordon Road in Marion County



Chip Sealing with HFRS-P2 in Curry County near Agness, Oregon



Double Chip Seal in Crook County using HFRS-P2



Double Chip Seal in Crook County with HFRS-P2



Marion County Chip Sealing with HFRS-P2



Marion County Chip Sealing with HFSR-P2



Gravel road conversion in Jefferson County using HFRS-P2



Chip Sealing in Curry County Using RS-LTP



RS-LTP

Lane County

- ❖ Rapid Set Emulsion
- ❖ Designed to break quicker
- ❖ Can use in 40-70 degree temperatures
- ❖ Used in heavily shaded areas





Rock loss from previous
Chip Seal due to shade

Using RS-LTP on
Goodpasture Road in
Lane County





RS-LTP permits Chip Sealing on coastal roads

Chip Sealing on Ophir Road near Gold Beach



Chip Sealing on Hwy 31 near Paisley, Oregon using HFRS-P1



Hwy 31 Chip Seal Using HFRS-P1



PMCRS-2H

Siskiyou County

**Polymer Modified
Cationic Rapid Set**

Rapid curing

**Stiffer asphalt binder
for hotter climates**



Chip Sealing in Klamath County with PMCRS-2H



Klamath County Chip Sealing with PMCRS-2H



CRS-2P

Crook County

Rapid set Cationic
Emulsion

Polymer modified

Good chip retention

Can be used on high traffic
roads



Chip Sealing on Hwy 20 West of Burns using CRS-2P



Chip Sealing with AC-15P

ODOT Hwy 97

Deschutes County



AC-15P

Hot applied binder

Use with coated chip rock

Sweep immediately
after application

Quick traffic return

Deschutes County



Empire Street in City of Bend



Otta Seal Gravel Road Conversions

- ❖ Economical tool for converting low volume gravel roads to hard surface
- ❖ Uses HFMS-2 (High Float Medium Set-2) also known as HFE 150
- ❖ Maintenance grade $\frac{3}{4}$ "- 0 rock
- ❖ Otta Seal should be followed with an $\frac{3}{8}$ " chip seal the same season
- ❖ Holds up well in harsh climates

Otta Seal using HF 150



Gravel road conversion
in La Pine area

Otta Seal gravel road conversion with Chip Seal and Fog Seal



Otta Seal followed by 3/8 Chip Seal





Common Fog Seal Oils

HFRS-P1 Dilute

CSS-1 Dilute

CSS-1H Dilute

SS-1 H Dilute



Fog Sealing

Helps with rock retention

Seals small cracks in mat
and keeps moisture out

Striping contrast

Positive public perception

Protects surface from oxidation



Distributors for emulsions and hot oil



Armac Inc, General Contractors



Bearcat Trucking



Transport booster trucks for both hot oil and emulsions



Pre-Chip Seal Meeting

Albina can
provide product
and chip seal
training



Rock and oil
compatibility
testing done
for the customer
in our lab...



Rep may be provided
on-site for job startup if
needed
(schedule permitting)

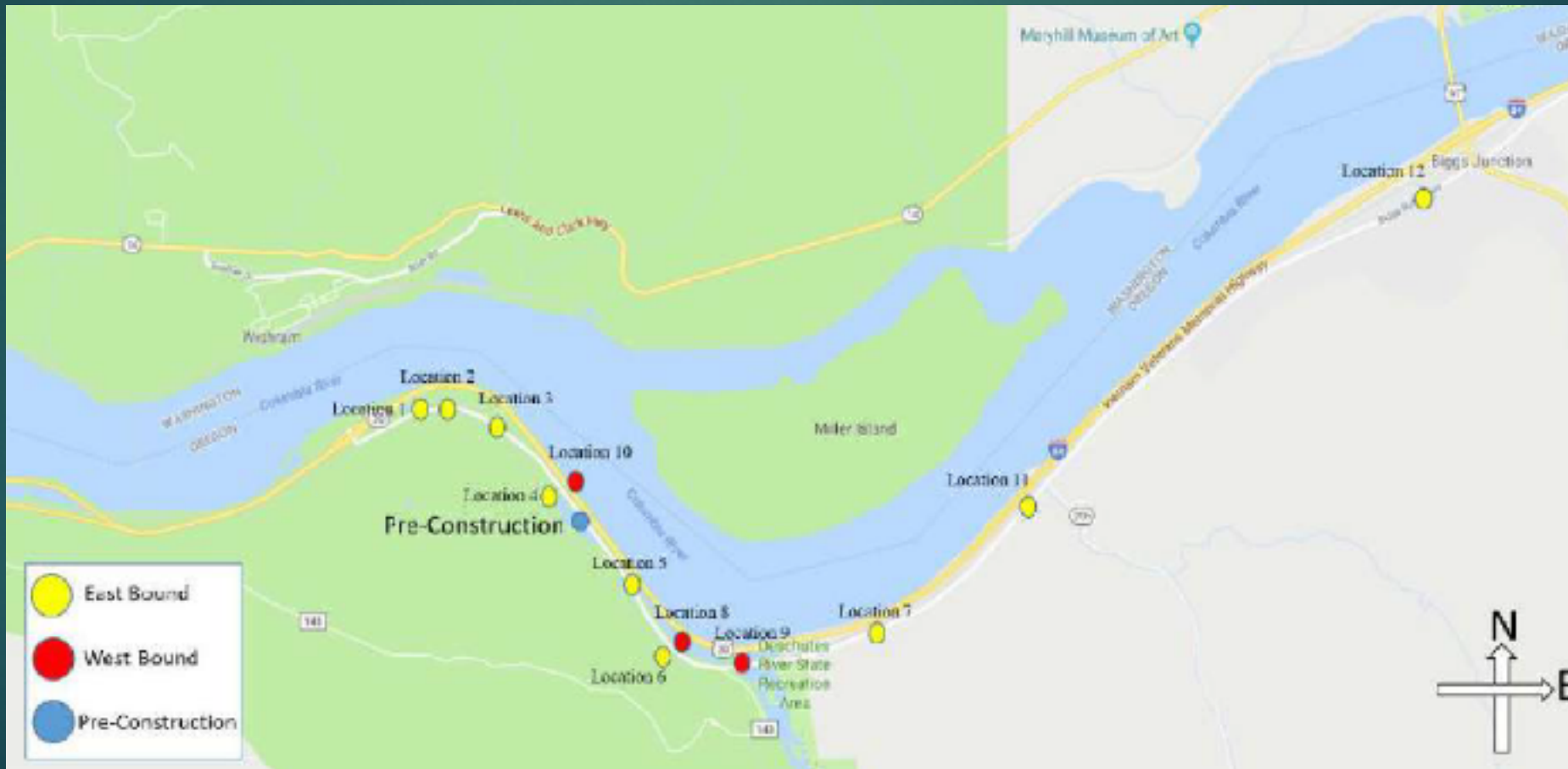


Calibrating equipment Checking Rock Rates



ODOT Chip Seal Demo Project

Done in June of 2019 - Hwy 30 West of Biggs Junction





ODOT Trials Overseen by Contract with Iowa State University

- ❖ Goal to come up with effective chip seal designs
- ❖ Trials used chip seal oils from three different oil suppliers
- ❖ Results will continue to be evaluated for a year

Road Surface before Beginning Chip Seal project



**Some
patching done
prior to
construction**



Chip Seal construction done by ODOT crews



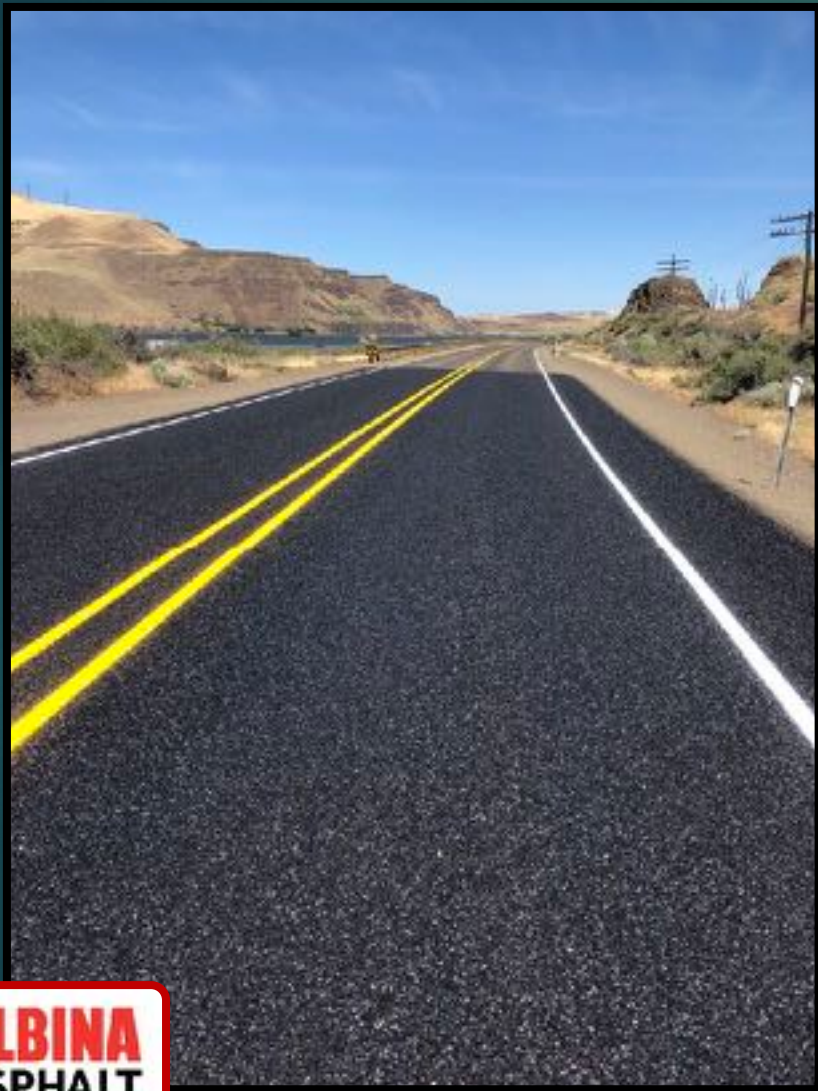
One day after construction



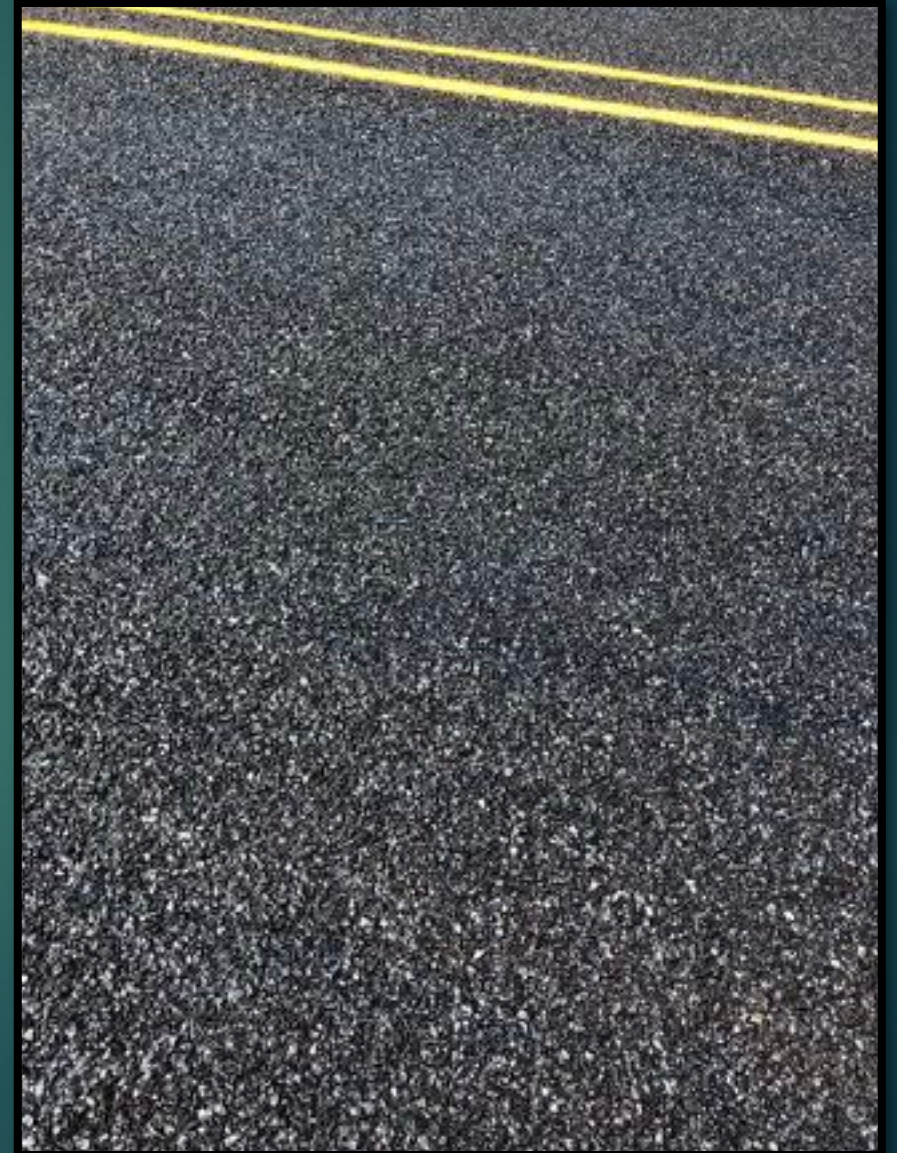
Hwy 30 after Fog Seal and striping



Hwy 30 - June 2019



ODOT Chip Seal Demo Project



Thank You!
For the opportunity
to be your
oil supplier...

Questions:



Contact Information:

Andy Anderson – (541) 777-7139

Andy.anderson@albina.com

Tom Shamberger - (541) 604-1021

Tom.shamberger@albina.com

Sales

Kyle Arntson – (360)-816-8536

Kyle.Arntson@albina.com

Ken VanDaam – (360)-816-8072

Ken.vandaam@albina.com