



.....>

Putting the VALUE in Valuable Pavement Management Data Collection

NWPMA 2017
Mike Harrell, P.E.

October 18, 2017

© 2017 Applied Research Associates, Inc. ARA Proprietary



NATIONAL SECURITY



ENERGY & ENVIRONMENT



INFRASTRUCTURE



HEALTH SOLUTIONS

Learning Objective(s)

- Pavement management systems require data to develop and refine pavement performance models.
- This presentation will highlight cost-effective data collection strategies that still provide valuable data to support pavement management.

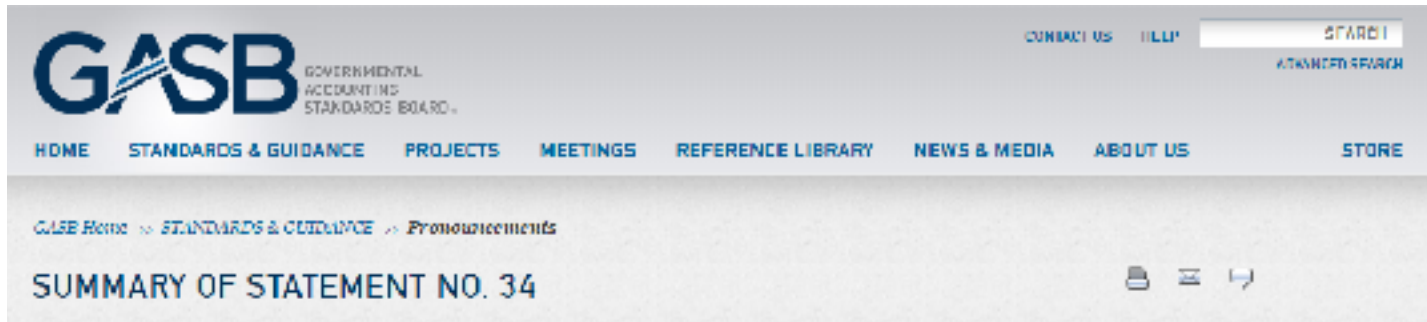
Outline

- Requirements
- Sub-surface Data Collection
- Surface Data Collection

Requirements – “Compliance”

- What is required
- GASB 34
- MAP-21

Compliance – GASB 34



- Government Accounting Standards Board Rule 34
 - Straight-line depreciation, or
 - Observed condition and predicted performance

Compliance – MAP-21



About Programs Resources Drifing Room Contact Search FHWA



MAP-21 - Moving Ahead for Progress in the 21st Century

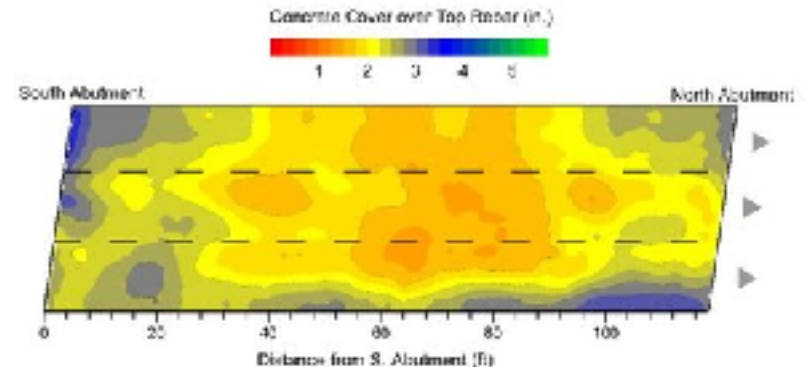
- *Moving Ahead for Progress in the 21st Century*
 - Strengthens America's highways
 - Establishes a performance-based program.
 - Creates jobs and supports economic growth
 - Supports the DOT's aggressive safety agenda
 - Streamlines Federal highway transportation programs.
 - Accelerates project delivery and promotes innovation.

Structural Evaluation – What’s Beneath the Surface

Ground Penetrating Radar



Source: Infrasense



Source: Infrasense

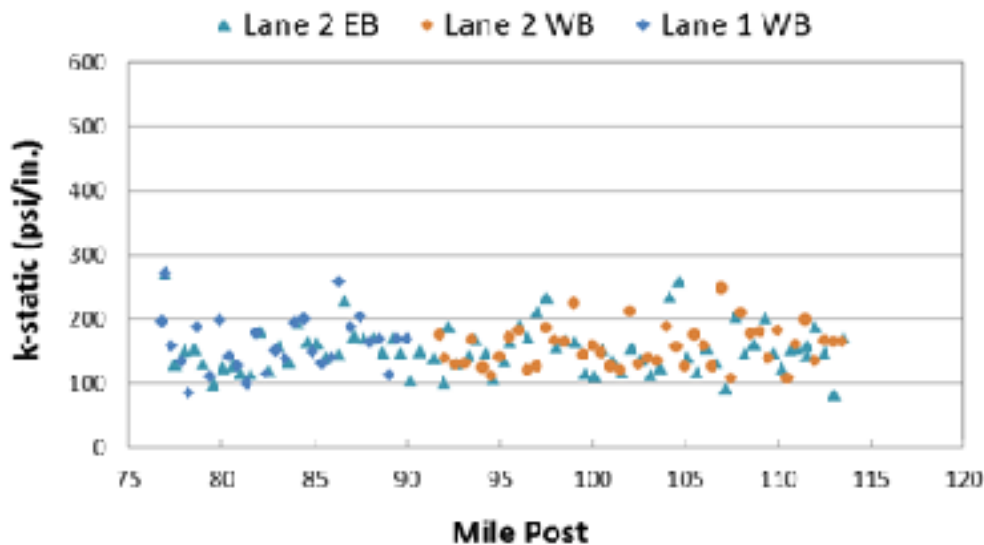
Structural Evaluation – What’s Beneath the Surface

Pavement Coring



Structural Evaluation – What’s Beneath the Surface

Deflection Testing



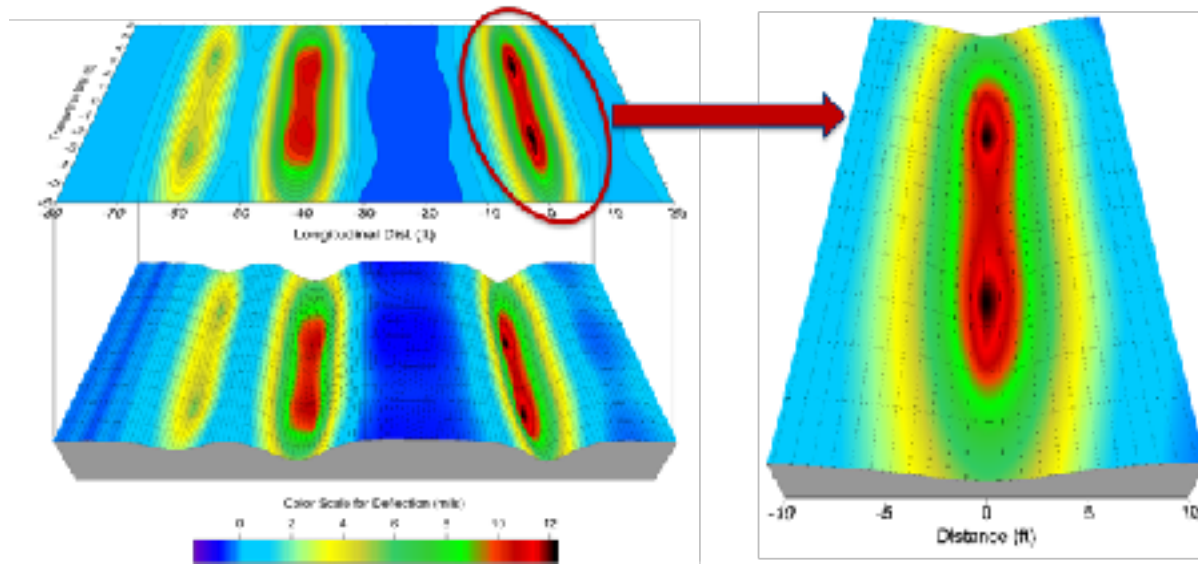
Structural Evaluation – What’s Beneath the Surface

Deflection Testing



Structural Evaluation – What’s Beneath the Surface

Deflection Testing



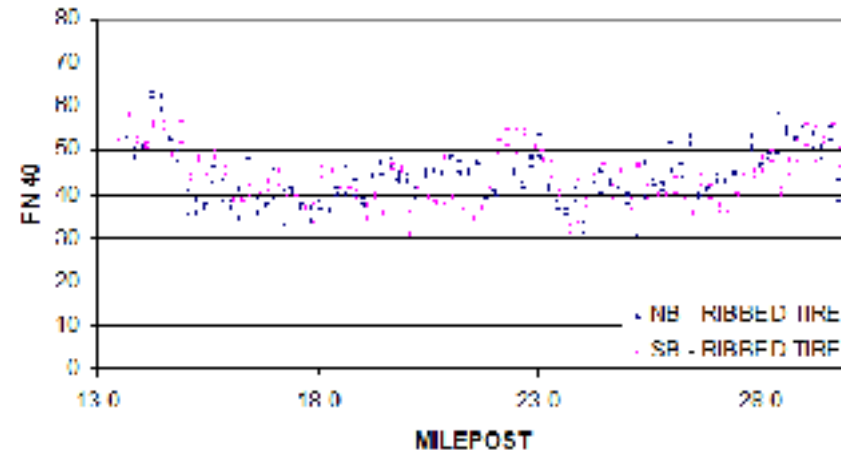
Pavement Data – Typical Collection

- Imagery
- Cracking
- Roughness
- Rutting
- Faulting
- Friction

Friction Testing – Surface Quality

Safety

Micro and Macro Texture



Pavement Data Collection – Typical Methods

- Foot on Ground
- Windshield
- Imagery-to-Desktop: semi-automated
- Sensors (laser profile, LCMS)
- Imagery-to-Answers: fully automated

Collection and Processing Methods

- Foot-on-ground survey
- Automated data survey vehicle (DSV)
 - **High-resolution images**
 - **Rated manually in the office**
- Automated distress identification and rating



Laser Crack Measurement System (LCMS)



Source: Pavemetrics

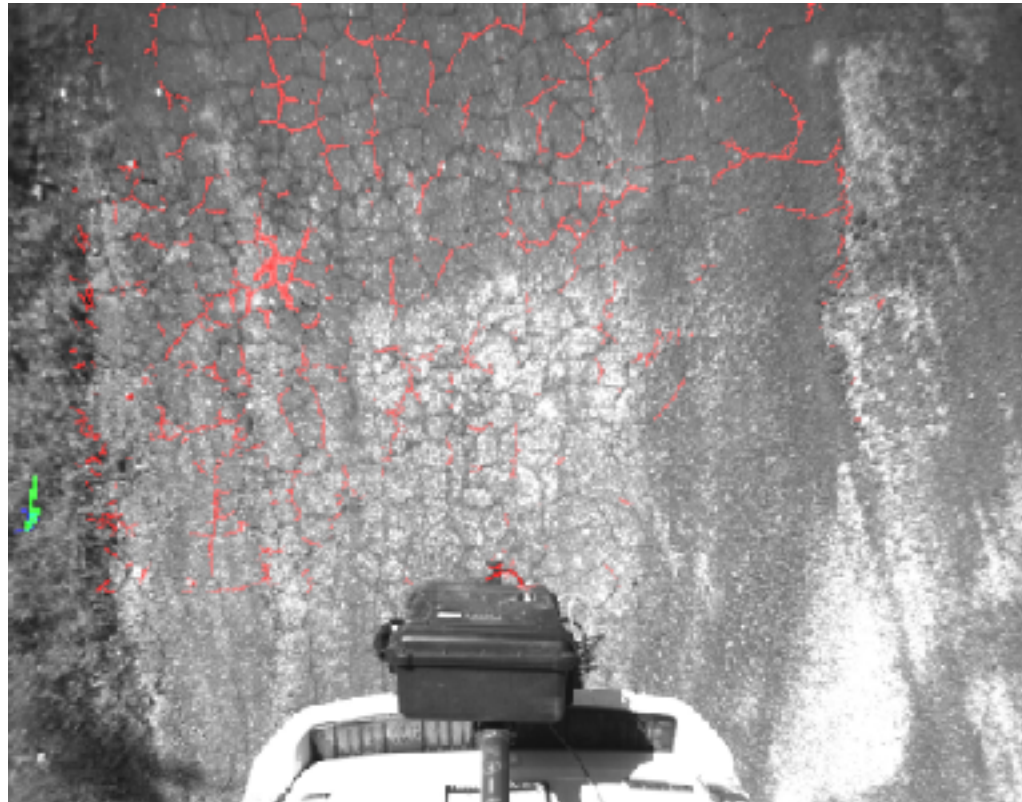
PaVision®



PaVision® Survey Image - Raw



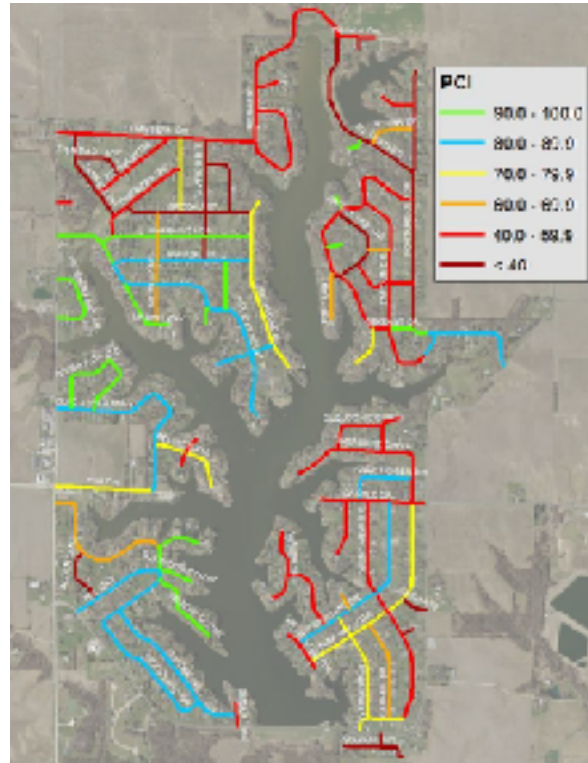
PaVision® Survey Image - Processed



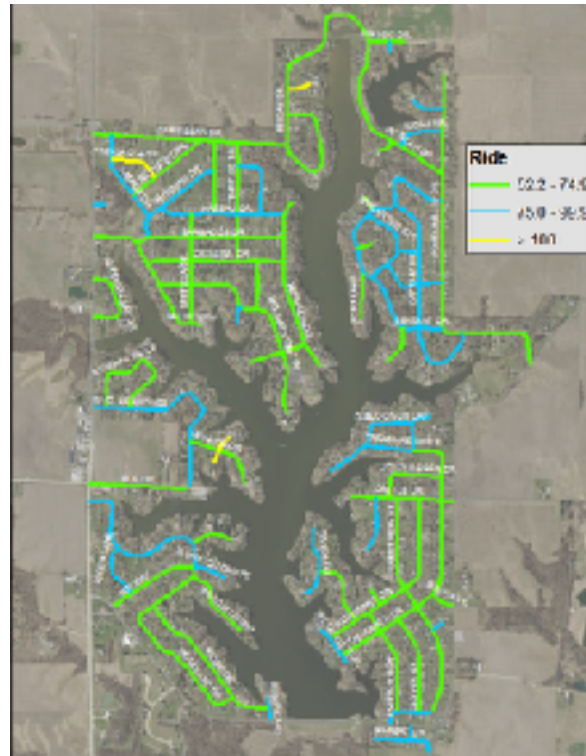
Google Map Overlay/Interface



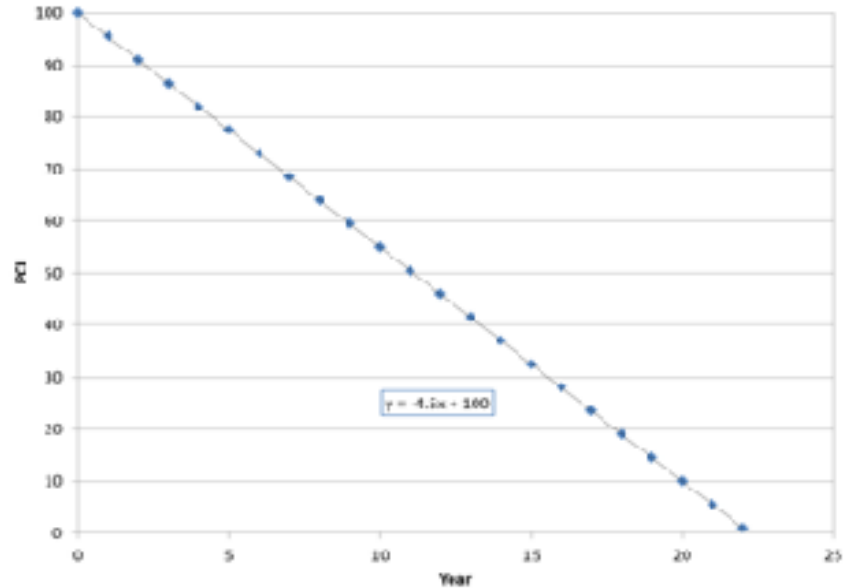
Surface Condition Ratings



Ride Data



Pavement Management Development - Inputs



+

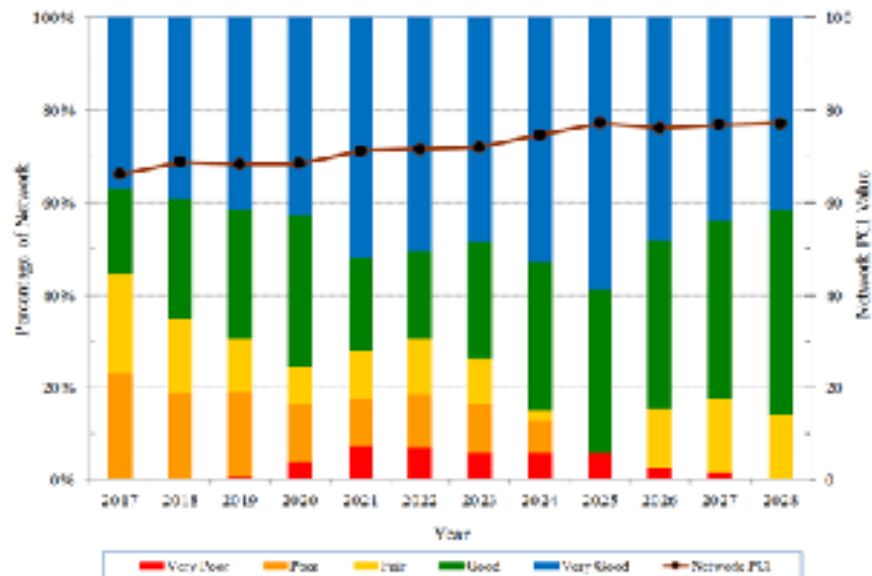
PCI Value	PCI Rating	HMA Roads All Traffic Treatment
100	Excellent	Defer Maintenance
90	Very Good	Crack Seal
80	Good	Distress Repair + Crack Seal
60	Fair	2" Mill and OL
40	Poor	2" Mill + Patch + 2" OL
20	Failed	FDR + 2" OL
0		

+

- Treatment Unit Costs
- Annual Budget

Pavement Management Development - Result

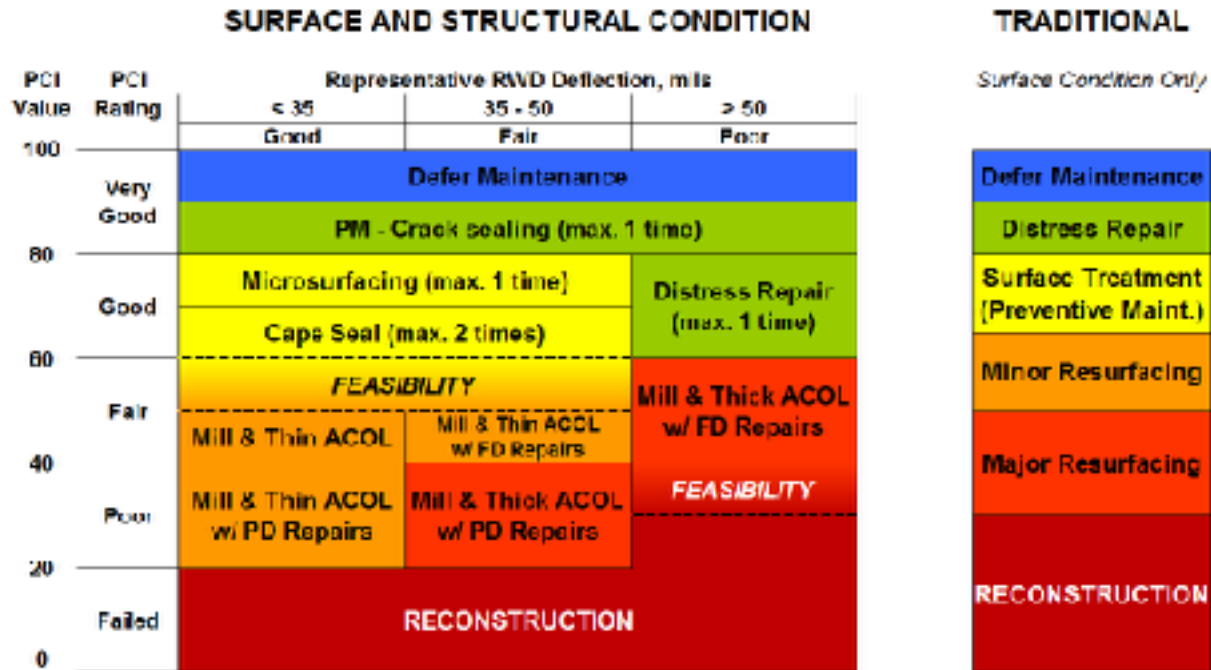
- 10-Year plan of what work to accomplish where
- 10-Year forecast of surface condition based on plan



Pavement Management Development - Result

INVENTORY	BEG STA	END STA	ROAD NAME	2017	2018	2019	2020	2021	2022	2023	2024	2025	2026
050 71365 000000	0.00	0.04	BLVD. DE CANNES	-	-	-	-	Chip Seal	-	-	-	-	-
050 71366 000000	0.00	0.26	RIVIERA CIRCLE	-	-	-	-	-	-	Chip Seal	-	-	-
050 71367 000000	0.00	0.26	ELMDR.	-	-	Chip Seal	-	-	-	-	-	-	-
050 71368 000000	0.00	0.21	MADRADO DR.	-	-	Chip Seal	-	-	-	-	-	-	-
050 71369 000000	0.00	0.10	MADRADO DR.	-	-	-	-	-	-	-	-	-	-
050 71170 000000	0.00	0.21	NEWPORT BAY DR.	-	-	-	-	-	Chip Seal	-	-	-	-
050 71171 000000	0.00	0.01	RENO COURT	-	-	Strip Seal w/ Crack Seal	-	-	-	-	-	-	-
050 71172 000000	0.00	0.54	CARIBBEAN DR.	-	-	-	2" Mill Patch and CL	-	-	-	-	-	Crack Seal and Patchwork Repair
050 71173 000000	0.00	0.21	JAMAICA DR.	-	-	-	-	-	Double Chip Seal w/ FDR	-	-	-	-
050 71174 000000	0.00	0.21	KEYWEST DR.	-	-	-	-	-	-	Double Chip Seal w/ FDR	-	-	-
050 71175 000000	0.00	0.20	KEY LARGO TERR.	-	-	Chip Seal	-	-	-	-	-	-	-
050 71176 000000	0.00	0.31	TAMPOCO DR.	-	-	Double Chip Seal w/ FDR	-	-	-	-	-	-	-
050 71177 000000	0.00	0.14	TRINIDAD LANE	-	-	Double Chip Seal w/ Crack Seal	-	-	-	-	-	-	-
050 71178 000000	0.00	0.26	BAHAMAS DR.	-	-	Chip Seal w/ Crack Seal	-	-	-	-	-	-	-
050 71179 000000	0.00	0.21	NASSAU DR.	-	-	Double Chip Seal w/ Crack Seal	-	-	-	-	-	-	-
050 71180 000000	0.00	0.14	SAN JUAN DR.	-	-	Double Chip Seal w/ Crack Seal	-	-	-	-	-	-	-

Pavement Management Highlights



Additional Data allows you to choose the *right* project at the *right* time!

* Source: Champaign County, 2009.

Example: Hybrid Approach

Tompkins County, NY

Anticipated Truck Volume (ESALs)	Initial Pavement Condition		
	Good	Fair	Poor
Low	A	A	A
Medium	A & B	A & B	A
High	A & B	A & B	A

A= Visual Assessment Only
B= Pavement Life Consumed



Pavement Management – Value Proposition

Use the right tool at the right time

Cost/Benefit approach

Data facilitates smart decisions

- But you don't have to pay a lot for data

Thank You!

Mike Harrell, P.E.

ARA, Inc.

100 Trade Centre Drive, Suite 200

Champaign, Illinois 61820

Phone: (217) 356-4500

mharrell@ara.com

