

PART II:

10 Critical Steps for an Effective PMP

Sui Tan, PE

StreetSaver

6

Update Unit Costs

The screenshot shows the 'Decision Tree' application window. On the left is a file tree with the following structure:

- Arterial
 - AC
 - Condition Category I - Very Good
 - Crack Treatment
 - Surface Treatment
 - Restoration Treatment
 - Condition Category II - Good, Non-Load Related
 - Condition Category III - Good, Load Related
 - Condition Category IV - Poor
 - Condition Category V - Very Poor
 - AC/AC
 - AC/PCC
 - ST
 - PCC
- Collector
 - AC
 - AC/AC
 - AC/PCC
 - ST
 - PCC
- Residential/Local
- Other

On the right, the 'Treatment Information' panel displays:

- Treatment: DOUBLE CHIP SEAL
- Cost/Sq Yd, except Seal Cracks in LF: 4.40
- Years Between Surface Seals: 7

A blue bar at the bottom of the window contains the text 'Update Costs by Treatment'. At the very bottom, there are buttons for 'Print', 'Save', 'Save & Close', and 'Cancel'.

Why is it Important?

- ✓ Use for Needs calculation
- ✓ Use for treatment costs



CITY OF ANYWHERE
1232 Washington Street
Calistoga, CA 94515

Needs - Projected PCI/Cost Summary

Inflation Rate = 3.00 % Printed: 10/29/2014

Year	PCI Treated	PCI Untreated	PM Cost	Rehab Cost	Cost	
2015	80	49	\$192,963	\$6,162,381	\$6,355,344	
2016	79	47	\$1,864	\$892,503	\$894,367	
2017	81	44	\$45,826	\$1,149,536	\$1,195,362	
2018	82	42	\$5,196	\$831,086	\$836,282	
2019	82	40	\$22,800	\$427,811	\$450,611	
			% PM	PM Total Cost	Rehab Total Cost	Total Cost
			2.76%	\$268,649	\$9,463,317	\$9,731,966

RECONSTRUCT AC = \$75/SY

Projected PCI/Cost Summary

Inflation Rate = 3.00 % Printed: 10/29/2014

Year	PCI Treated	PCI Untreated	PM Cost	Rehab Cost	Cost	
2015	80	49	\$192,963	\$8,704,218	\$8,897,181	
2016	79	47	\$1,864	\$1,128,157	\$1,130,021	
2017	81	44	\$45,826	\$1,470,058	\$1,515,884	
2018	82	42	\$5,196	\$1,173,899	\$1,179,095	
2019	82	40	\$22,800	\$696,207	\$719,007	
			% PM	PM Total Cost	Rehab Total Cost	Total Cost
			2.00%	\$268,649	\$13,172,539	\$13,441,188

RECONSTRUCT AC = \$120/SY

Where to find them?

- ✓ Bid prices
- ✓ Contractors
- ✓ Neighboring agencies
- ✓ Maintenance folks
- ✓ Engineering folks
- ✓ Design costs
- ✓ Construction administration
- ✓ Other incidental costs
- ✓ ADA Compliance
- ✓ NPDES Compliance

How to Set Unit Costs

Use for network planning

Not for construction

Do include:

- Design cost
- labor and materials
- Incidental – restriping, raising utility boxes, etc
- Construction administration

How Often?

At least annually

7

Update Decision Tree

Decision Tree

File

- Arterial
 - AC
 - Condition Category I - Very Good
 - Crack Treatment
 - Surface Treatment
 - Restoration Treatment
 - Condition Category II - Good, Non-Load Related
 - Condition Category III - Good, Load Related
 - Condition Category IV - Poor
 - Condition Category V - Very Poor
 - AC/AC
 - AC/PCC
 - ST
 - PCC
- Collector
 - AC
 - AC/AC
 - AC/PCC
 - ST
 - PCC
- Residential/Local
- Other

Treatment Information

Treatment: RUBBERIZED CHIP SEAL

Cost/Sq Yd, except Seal Cracks in LF: 24.92

Years Between Surface Seals: 0

Update Costs by Treatment

Print | Save | Save & Close | Cancel

Why is it Important?

- ✓ Drives the investment strategies
- ✓ Drives the needs assessment
- ✓ It is the brain of PMS

Common Issues

- ✓ Can't get the average network PCI to above 80s
- ✓ Confusion of same treatments in different condition categories

Can PCI reach high 80's?

Decision Tree

File

- Arterial
 - AC
 - Condition Category I - Very Good
 - Condition Category II - Good, Non-Load Related
 - Condition Category III - Good, Load Related
 - Condition Category IV - Poor
 - Condition Category V - Very Poor
 - AC/AC
 - AC/PCC
 - ST
 - PCC
- Collector
- Residential/Local
- Other

Treatment Information

Treatment: DO NOTHING

Cost/Sq Yd, except Seal Cracks in LF: 0.00

Years Between Surface Seals: 0

Update Costs by Treatment

Print Save Save & Close Cancel

Decision Tree

File

- Arterial
 - AC
 - Condition Category I - Very Good
 - Condition Category II - Good, Non-Load Related
 - Condition Category III - Good, Load Related
 - Condition Category IV - Poor
 - Condition Category V - Very Poor
 - AC/AC
 - AC/PCC
 - ST
 - PCC
- Collector
- Residential/Local
- Other

Treatment Information

Treatment: DO NOTHING

Cost/Sq Yd, except Seal Cracks in LF: 0.00

Years Between Surface Seals: 0

Update Costs by Treatment

Print Save Save & Close Cancel

Decision Tree

File

- Arterial
 - AC
 - Condition Category I - Very Good
 - Crack Treatment
 - Surface Treatment
 - Restoration Treatment
 - Condition Category II - Good, Non-Load Related
 - Condition Category III - Good, Load Related
 - Condition Category IV - Poor
 - Condition Category V - Very Poor
 - AC/AC
 - AC/PCC
 - ST
 - PCC
- Collector
- Residential/Local
- Other

Treatment Information

Treatment: **MILL AND 2 INCH OVERLAY**

Cost/Sq Yd, except Seal Cracks in LF: **24.92**

Number of Surface Seals Before Overlay: **2**

Update Costs by Treatment

Print Save Save & Close Cancel

Decision Tree

File

- Arterial
 - AC
 - Condition Category I - Very Good
 - Crack Treatment
 - Surface Treatment
 - Restoration Treatment
 - Condition Category II - Good, Non-Load Related
 - Condition Category III - Good, Load Related
 - Condition Category IV - Poor
 - Condition Category V - Very Poor
 - AC/AC
 - AC/PCC
 - ST
 - PCC
- Collector
- Residential/Local
- Other

Treatment Information

Treatment: **MILL AND 2 INCH OVERLAY**

Cost/Sq Yd, except Seal Cracks in LF: **24.92**

Years Between Surface Seals: **0**

Update Costs by Treatment

Print Save Save & Close Cancel

Same Treatment Name

Decision Tree

File

Arterial

- AC
 - Condition Category I - Very Good
 - Crack Treatment
 - Surface Treatment
 - Restoration Treatment**
 - Condition Category II - Good, Non-Load Related
 - Condition Category III - Good, Load Related
 - Condition Category IV - Poor
 - Condition Category V - Very Poor
- AC/AC
- AC/PCC
- ST
- PCC

- Collector
- Residential/Local
- Other

Treatment Information

Treatment: **MILL AND 2 INCH OVERLAY**

Cost/Sq Yd, except Seal Cracks in LF: 24.92

Number of Surface Seals Before Overlay: 2

Update Costs by Treatment

Print Save Save & Close Cancel

Decision Tree

File

Arterial

- AC
 - Condition Category I - Very Good
 - Crack Treatment
 - Surface Treatment
 - Restoration Treatment
 - Condition Category II - Good, Non-Load Related
 - Condition Category III - Good, Load Related**
 - Condition Category IV - Poor
 - Condition Category V - Very Poor
- AC/AC
- AC/PCC
- ST
- PCC

- Collector
- Residential/Local
- Other

Treatment Information

Treatment: **MILL AND 2 INCH OVERLAY**

Cost/Sq Yd, except Seal Cracks in LF: 24.92

Years Between Surface Seals: 0

Update Costs by Treatment

Print Save Save & Close Cancel

How to Set Treatment Strategies?

- ✓ Pavement Preservation Approach

“ Right time, right place, right treatment”

- ✓ Local Policies

- ✓ Worst first

- ✓ Hybrid

Best Management Practice



CITY OF ANYWHERE
1232 Washington Street
Calistoga, CA 94515

Decision Tree

Printed: 10/29/2014

Functional Class	Surface	Condition Category	Treatment Type	Treatment	Cost/Sq Yd, except Seal Cracks in LF:	Yrs Between Crack Seals	Yrs Between Surface Seals	# of Surface Seals before Overlay
Arterial	AC	I - Very Good	Crack Treatment	SEAL CRACKS	\$1.62	3		
			Surface Treatment	SLURRY SEAL	\$4.40		7	
			Restoration Treatment	MILL AND 2 INCH OVERLAY	\$24.92			2
		II - Good, Non-Load Related		RUBBERIZED CHIP SEAL	\$10.23		9	
		III - Good, Load Related		MILL AND 2 INCH OVERLAY	\$24.92			
		IV - Poor		MILL AND 4 INCH OVERLAY	\$38.00			
	V - Very Poor		FULL DEPTH RECLAMATION	\$65.00				
	AC/AC	I - Very Good	Crack Treatment	SEAL CRACKS	\$1.62	3		
			Surface Treatment	SLURRY SEAL	\$4.40		6	
Restoration Treatment			THIN AC OVERLAY(1.5 INCHES)	\$15.48			2	

How Often?

At least annually

8

M & R Update

Create Maintenance and Rehabilitation

File Sections: ADELE 10

Section: ADELE - 10

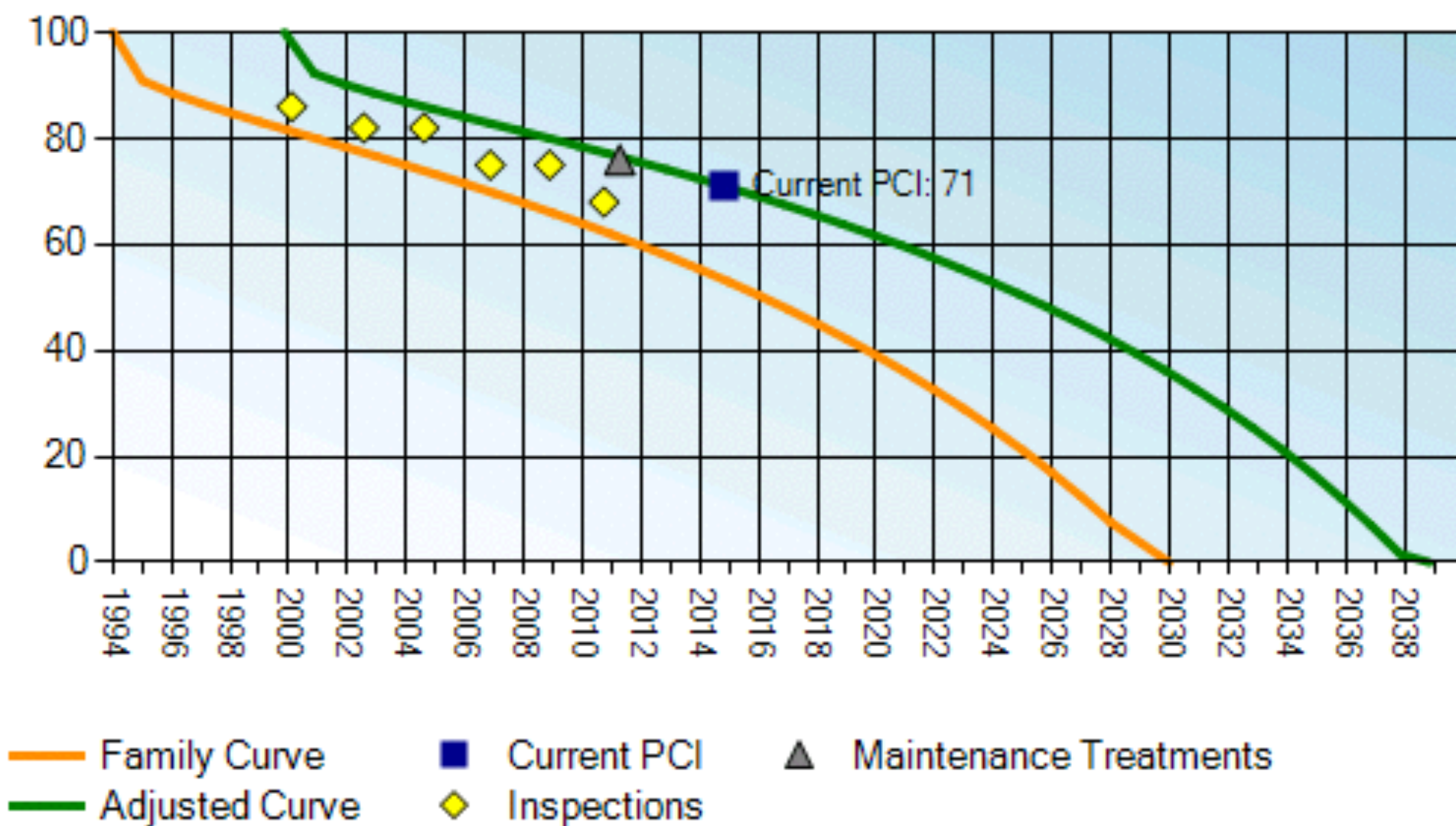
Date:	Treatment:
10/28/2014	RUBBERIZED CHIP SEAL
Thickness:	Comments:
0	
Sq. Ft.:	
0	
Cost:	
0	

Clear | Delete | Save | Save & New | Save & Close | Close

Why is it Important?

- ✓ Keep the section performance curve up to date
- ✓ PCI Increase – credit for the treatment applied
- ✓ Affect the needs assessment
- ✓ Build M&R history
- ✓ Data for customized performance curve

Deterioration Curve for Pavement Section (BERRY - 20)



How to Update

- Manual process
- Batch process



Pavement Sections	GIS Toolbox	Table Maintenance
Inspections	Budgeting	Reporting
Maintenance Treatments	Asset Management	

Utilities

Export Sections	Import Section Attributes	Combine Section	Events Migration Info	Import Inspection Units	Export Inspection Units	Import M&R Utility	User Defined Fields
Export GIS Data	Download Inspection Template	Download M&R Template					

9

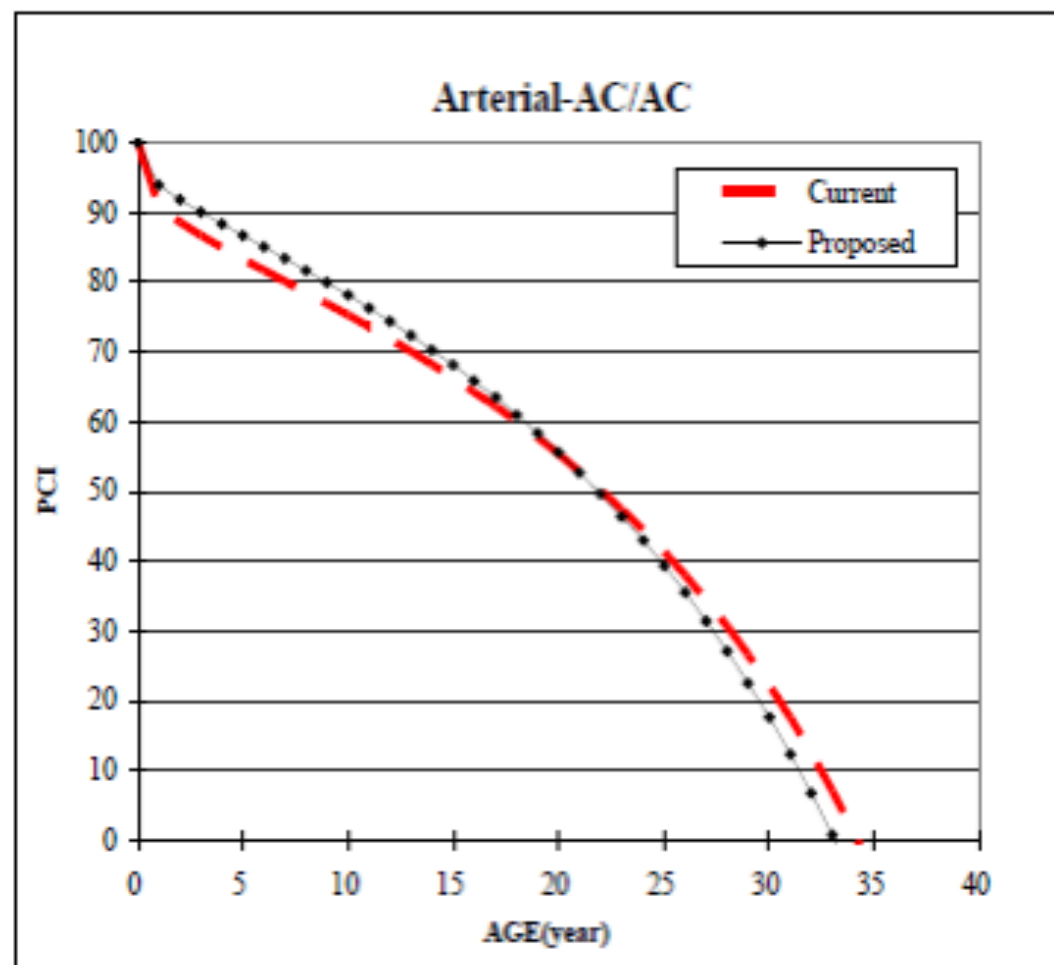
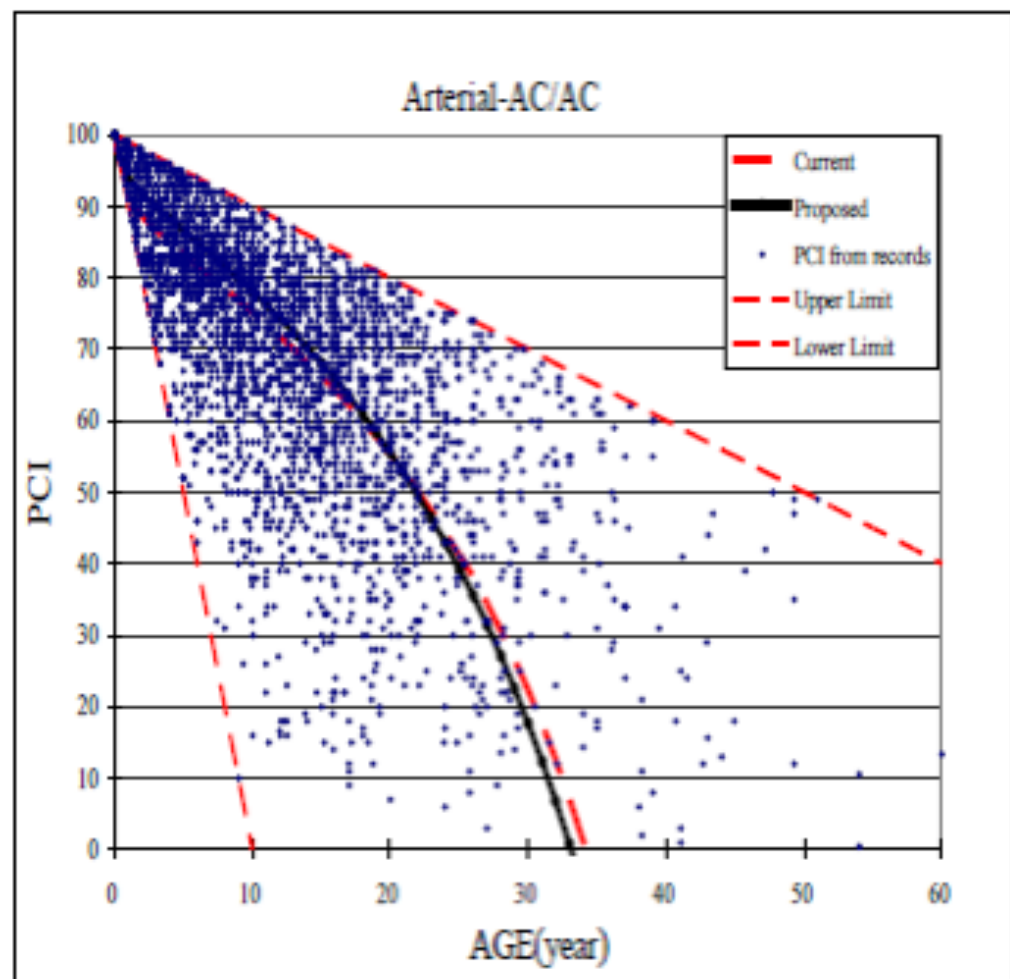
Enter Treatment Correctly



Why is it Important?

- Data used to fine tune performance curve
- Use to build customize performance curve

Proposed Arterial-AC/AC Performance Curve



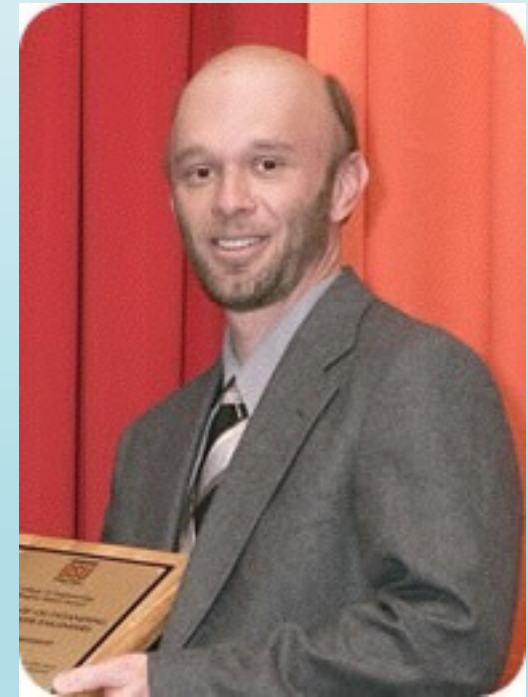
10

Communicate Results

Must Read:

Steve Townsend's

*5 Steps to Win Friends and
Influence People*



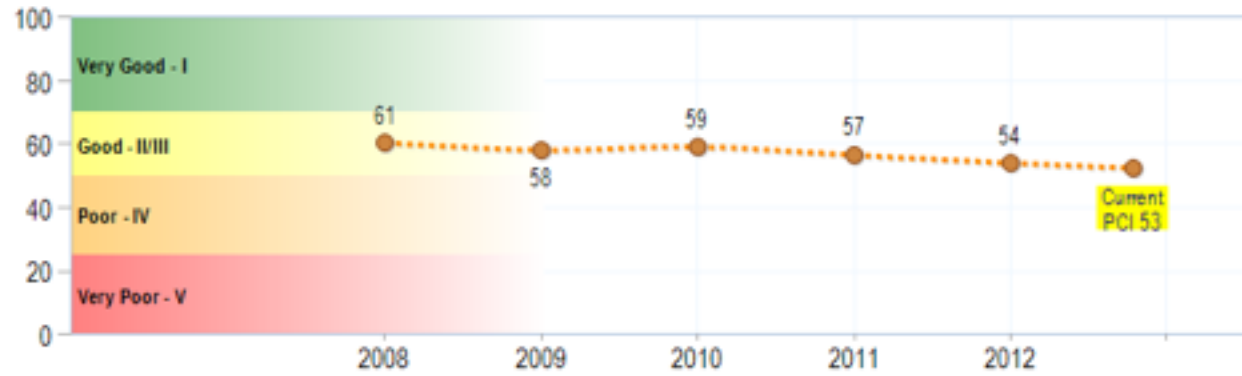


Know Your Audience

Teaching...

Executive Performance Summary

Historical Pavement Condition Trends



Current PCI



Network Inventory

Pavement Area: 0.1
(square miles)

Miles: 15.5

Lane Miles: 31.0

Sections: 128

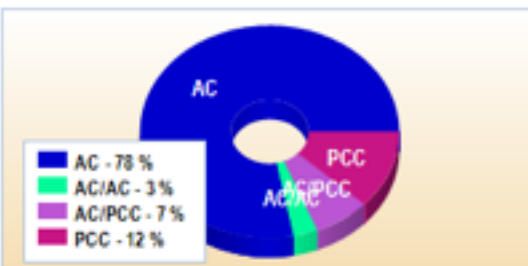
Current PCI by Functional Class



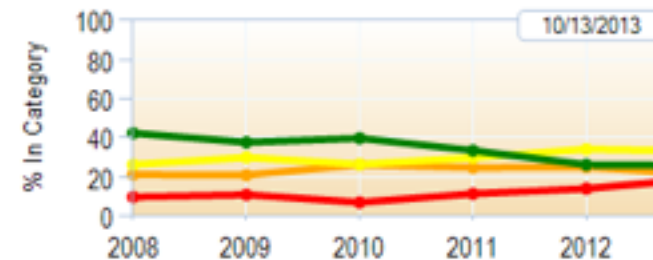
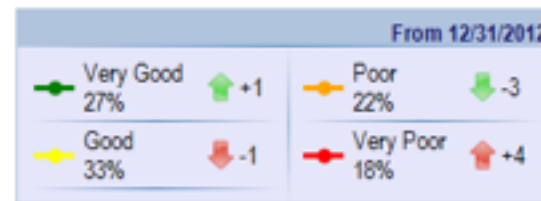
Remaining Service Life (years)



Surface Type



Historical Network Condition Trends



Source: StreetSaver

New Report Says Bay Area Road Quality Stagnant Over Last Three Years

By Brian Shields

Wed Oct 29th, 2014 1:29pm America/Los_Angeles



Like 11 people like this. [Sign Up](#) to see what your friends like.

OAKLAND (KRON) — The conditions on Bay Area streets aren't getting any better but they're also not getting any worse.

A new report from the Metropolitan Transportation Committee

RELATED COVERAGE

- [ROADS](#)
- [TRANSPORTATION](#)

Get the best performance. And get it without a long-term contract.

Internet
 Website
 Phone
 Email

[Get Started](#)

CORECONNECT
 CenturyLink Business

©2014 CenturyLink. All Rights Reserved.

KRON 4 SPECIAL SECTIONS



Ebola Outbreak
[What You Need to Know About The Killer Disease](#)

[READ MORE](#)
[My KRON4 Story](#)
[Submit your story!](#)



[READ MORE](#)



MY KID'S GOT GAME
[Submit your KRON 4's sports highlight here](#)

[READ MORE](#)



Public Outreach Campaign



Help the Town by supporting local business and its infrastructure by putting up a temporary lawn sign in your front yard!

